

# Natural Comforts

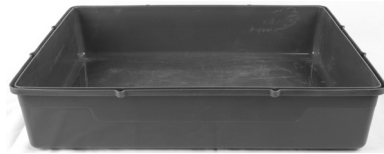
## 20" Rat Cage

### Assembly Instructions

Item #16063



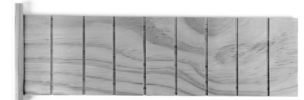
Wire Cage Set  
#901284



Plastic Base  
#901285



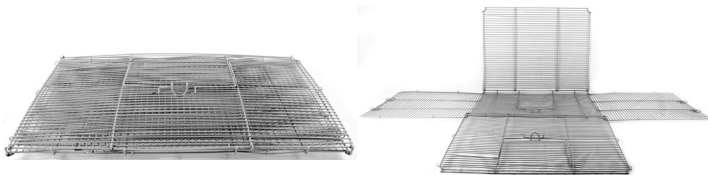
Wood Shelf X2  
#901286



Wood Ramp X2  
#901287

### Step 1

Place the wire panels on a flat surface with the door facing up. Unfold the front, back, and side panels.

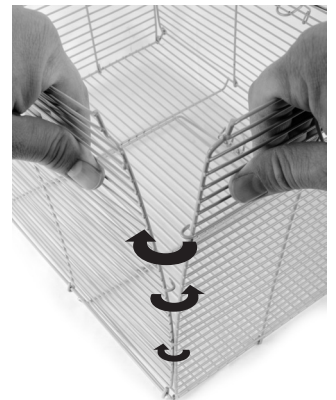


### Step 2

Connect the front cage panel (includes doorway) to the left side panel as shown. The "J" shaped wire hooks are specially designed to hook onto the side panel alternating the connection back and forth. Then connect the front panel and the side panel again to create a woven connection joint.

Repeat this connection between the remaining panels in each corner using the alternating "J" shaped hook.

**HINT:** Start by attaching bottom "J" hook and move up and attach top "J" shaped hook last.



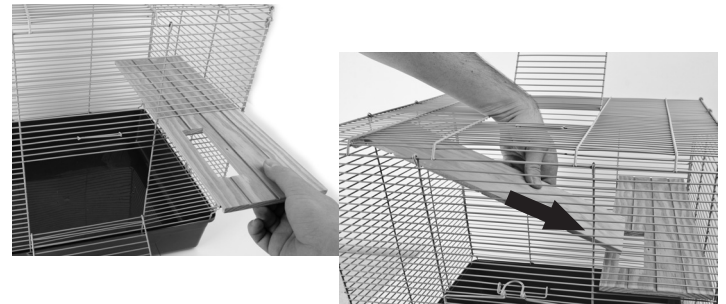
### Step 3

Place the assembled wire top onto the base making sure the bottom of the wire panels rest securely along the top edge of the base. Secure the top wire panels to the base using the 2 wire latches located on each side.



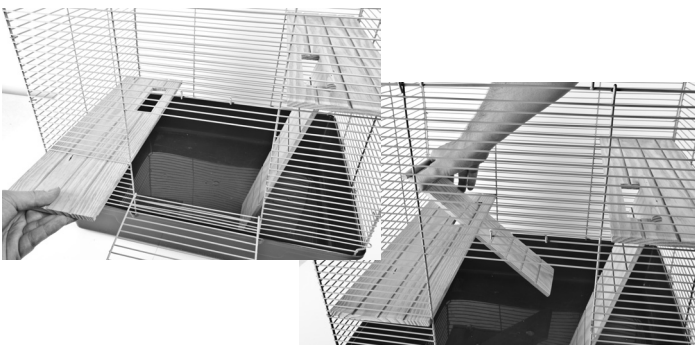
### Step 4

Slide the upper shelf into the 24th wire up from the bottom on the right side of the cage, so that the ramp opening is directed toward the front of the cage. Place the ramp through the top doorway with the tread side facing down. Next insert the bottom of the ramp through the opening in the shelf and allow the ramp to hang.



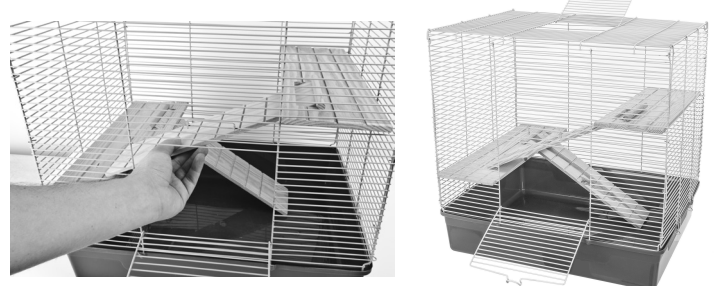
### Step 5

Slide the lower shelf into the 10th wire up from the bottom on the left side of the cage. Place the short ramp through the top of the cage and slide into the shelf and position securely.



### Step 6

Lift the long ramp up through the opening in the top shelf and position it securely onto the lower shelf.



Assembly Complete!

#30016063  
Revision Date:  
4/8/19

If you have questions or concerns about this product, contact our customer service department at 1-800-295-2243 and we will help you with any problems, Mon-Fri 8:00 – 4:00 MST or email us at [hello@warepet.com](mailto:hello@warepet.com)

**MADE IN CHINA**  
to the design specifications of  
**WARE MFG., INC.**  
Phoenix, AZ 85009, USA  
[WWW.WAREPET.COM](http://WWW.WAREPET.COM)

**Critter  
WARE®**